

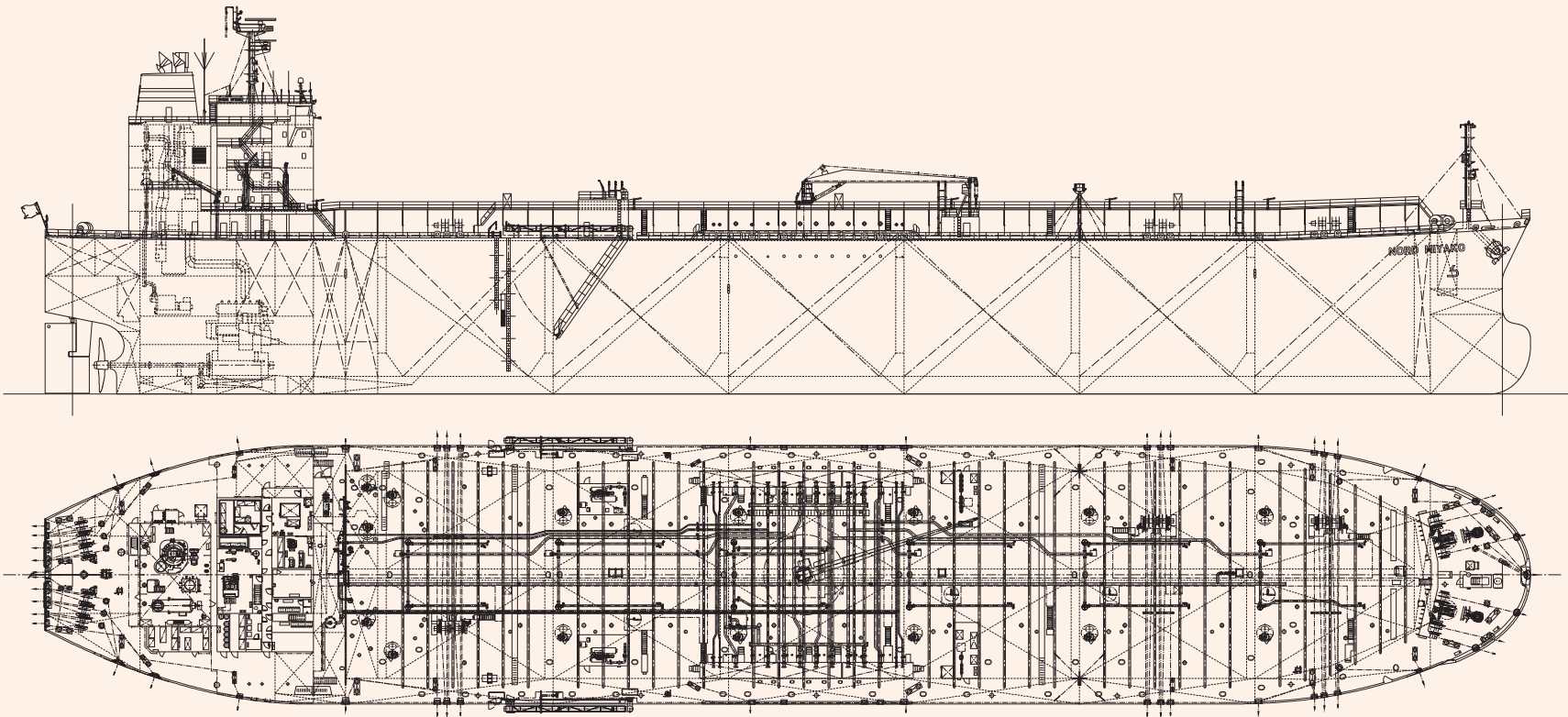
NORD MIYAKO 52,816 DWT Chemical / Product Oil Carrier

28

☐ Contents ☐ By Builder ☐ By Ship Type



NORD MIYAKO 52,816 DWT Chemical / Product Oil Carrier 28



PRINCIPAL PARTICULARS

Length (o.a.)	184.94 m	Main engine	MITSUI-MAN B&W 6S50ME-C9.6
Breadth (mld.)	32.20 m	MCR (kw×min ⁻¹)	6,820 kW × 89.0 min ⁻¹
Depth (mld.)	19.10 m	Speed (service)	abt. 14.5 knots
Draft (ext.)	13.316 m (Summer draft)	Complement	25 Persons
Gross tonnage	30,560	Classification	NIPPON KAIJI KYOKAI (NK)
Deadweight	52,816 MT	Builder	Minaminippon Shipbuilding Co., Ltd.

TAIAN NO.2 2,489 DWT Product Carrier 29

☐ Contents ☐ By Builder ☒ By Ship Type



TAIAN NO.2 2,489 DWT Product Carrier 29

This vessel is a dirty product oil tanker having the cargo tanks divided into 10. Heating coil system with thermal oil is equipped in the cargo tanks, making the cargo keep around 65 degrees Celsius.

For our company, it is the second vessel classified (so-lo-classified) by China Register (CR), classification society in Taiwan, R.O.C.

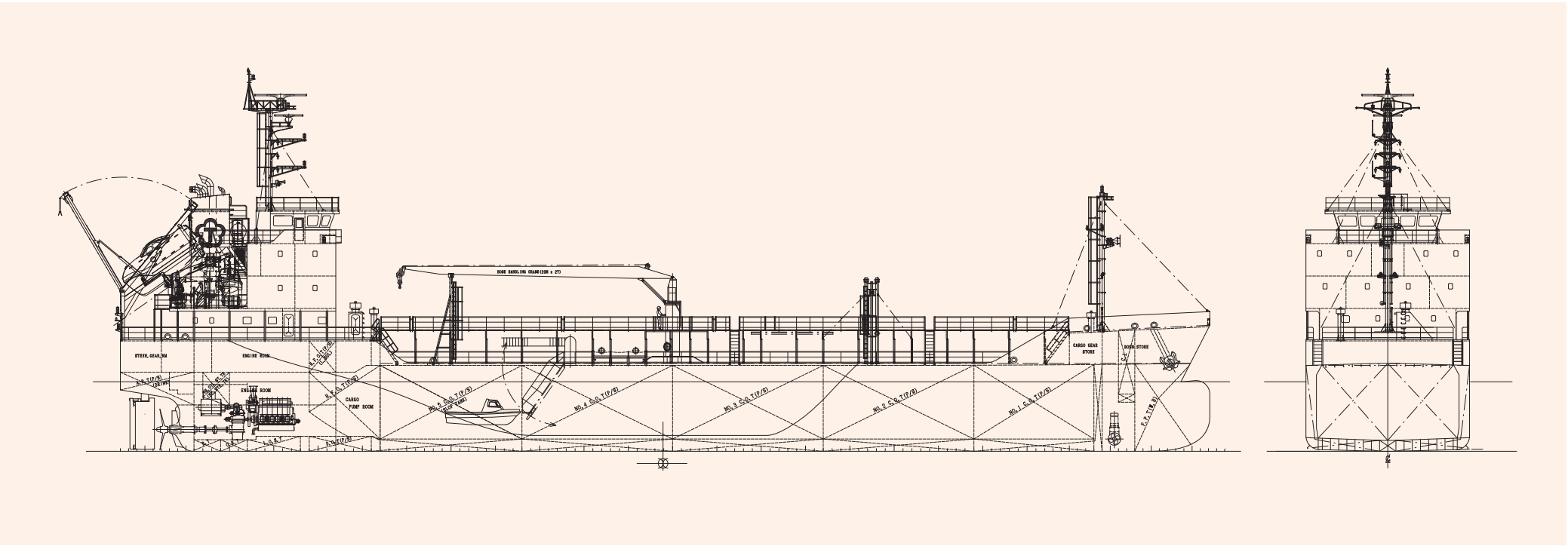
The hull form is designed to produce economic propulsion, which stern-fin is equipped in front of the propeller. In addition, flap-rudder is adopted to facilitate the piercing work.

The main engine with MCO of 1,471kW x 900rpm is adopted and the vessel maintains the navigation speed of 12.0kt.

PRINCIPAL PARTICULARS

Length (o.a.)	79.90 m	MCR (kwxrpm)	1,471 x 900
Length (b.p.)	76.00 m	NOR (kwxrpm)	1,250 x 853
Breadth (mld.)	12.00 m	Speed (max. trial)	12.90 knots
Depth (mld.)	6.30 m	(service)	12.00 knots
Draft (mld.)	5.10 m	Complement	17 persons
Gross tonnage	1,599	Classification	CR
Deadweight	2,489 T	Cargo pump	750 m³/h x 0.79 MPa x 331 kW x 2 sets
Main engine	DAIHATSU 6DEM-23L	Loading capacity	2,701 m³
		Builder	Sasaki Shipbuilding Co., Ltd.

In addition, a decelerating large-diameter propeller improves propulsion efficiency and reduces fuel consumption.



TENRYU MARU 749 GT Product Carrier 30

☐ Contents ☐ By Builder ☒ By Ship Type



TENRYU MARU 749 GT Product Carrier 30

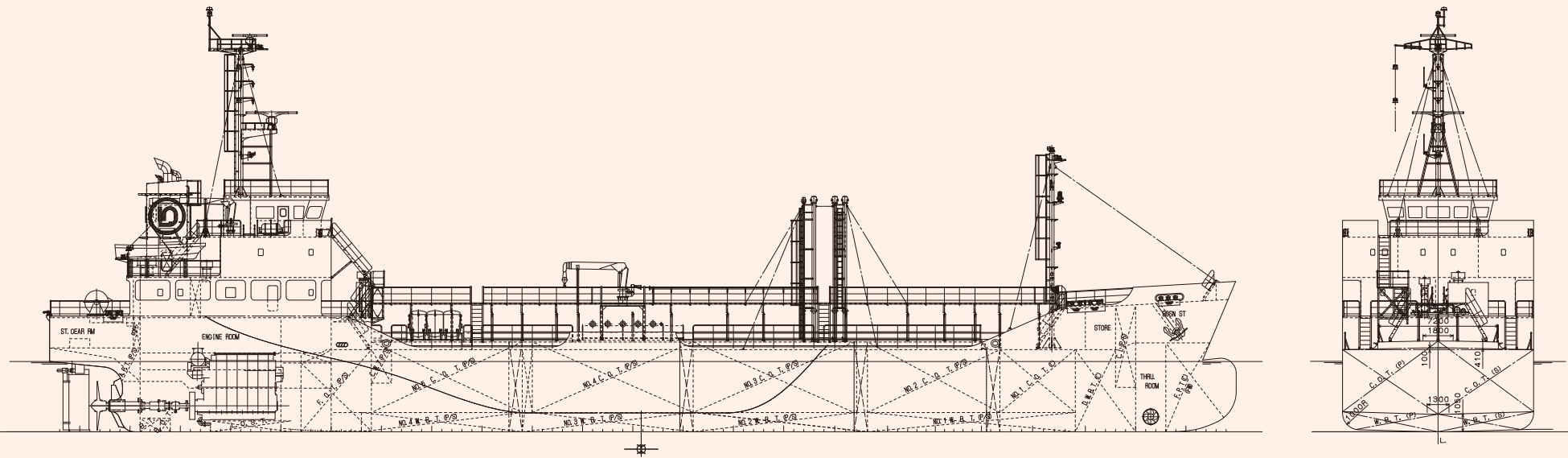
This vessel is a domestic clean product oil tanker, which is certified for navigation of greater coasting area (not international). This vessel has 4 stroke main engine capable to keep service speed 13.3 kt and navigate over 3,100 seamiles.

Electric-hydraulic type steering gear is available to steer up to 45 degrees. Controllable pitch propeller and C-type flap rudder is installed to improve maneuverability.

For energy-saving measure, a bulbous bow and stern fins are adopted for the hull form. Stern fins are installed to maintain a good flow into the propeller to improve propulsion efficiency and reduce fuel consumption.

PRINCIPAL PARTICULARS

Length (o.a.)	70.82 m	MCR (kw×rpm)	2,059 × 240
Length (b.p.)	67.00 m	NOR (kw×rpm)	1,750 × 227
Breadth (mld.)	11.40 m	Speed (max. trial)	14.23 knots
Depth (mld.)	4.90 m	(service)	13.30 knots
Draft (mld.)	4.19 m	Complement	9 persons
Gross tonnage	749 (Japanese Domestic)	Classification	JG
Deadweight	1,520 t	Cargo pump	150 m³/h × 80 mlc × 63 kW × 9 sets
Main engine	AKASAKA A38	Loading capacity	1,775 m³
		Builder	Sasaki Shipbuilding Co., Ltd.



TAI HONG 499 GT Product Carrier 31

☐ Contents ☐ By Builder ☒ By Ship Type



TAI HONG 499 GT Product Carrier 31

This vessel is a product oil tanker designed for especially bunkering, that carries HSHFO, LSHFO, MGO and LSMGO as intended cargo. The cargo tank is divided into 8. Hose handling crane has a large operating range and a lifting radius of 18 meters.

This vessel is registered under flag of ROC and is available to cruising area of Taiwan (30 nautical miles limited).

This vessel has 4 stroke main engine capable to keep service speed 10.0 kt and navigate over 2,500 seamiles. C-type flap rudder is adopted to improve maneuverability.

PRINCIPAL PARTICULARS

Length (o.a.)	47.15 m	NOR (kw×rpm)	637 × 1,279
Length (b.p.)	45.10 m	Speed (max. trial)	10.77 knots
Breadth (mld.)	10.00 m	(service)	10.00 knots
Depth (mld.)	4.25 m	Complement	7 persons
Draft (mld.)	3.55 m	Classification	CR
Gross tonnage	495	Cargo pump	300 m³/h × 0.7 MPa × 159 kW × 1 set, 200 m³/h × 0.7 MPa × 113 kW × 1 set
Deadweight	744 t	Loading capacity	725 m³
Main engine	YANMAR 6EY-17W	Builder	Sasaki Shipbuilding Co., Ltd.
MCR (kw×rpm)	749 × 1,350		

